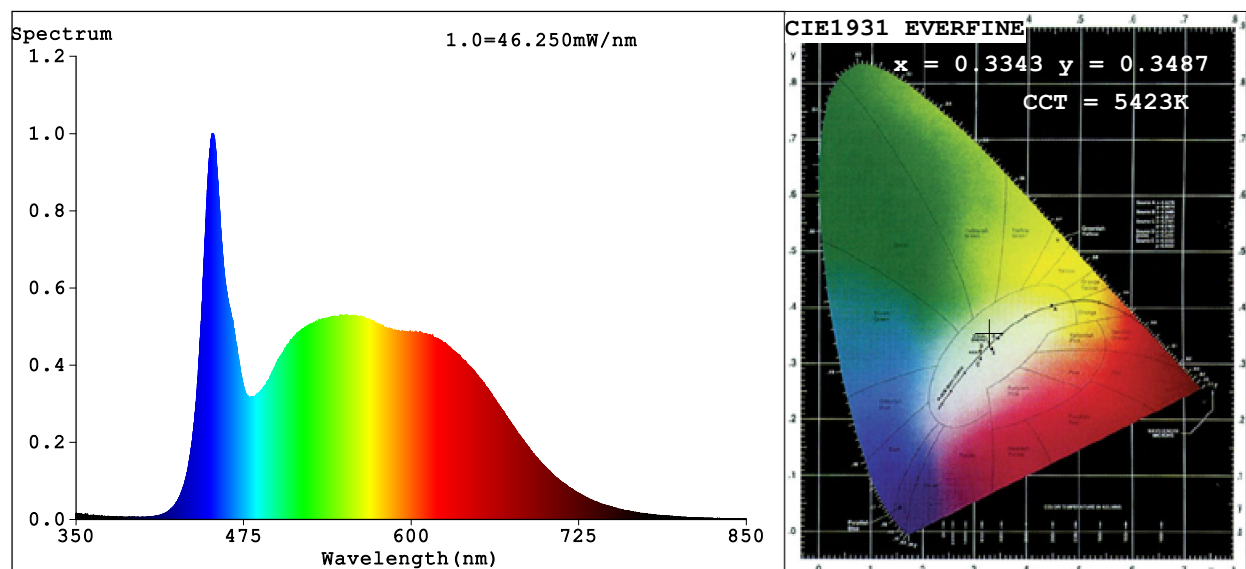


## Spectrum Test Report



### Color Parameters:

Chromaticity Coordinate:  $x=0.3343$   $y=0.3487$   $u'=0.2052$   $v'=0.4817$

$CCT=5423K$  ( $Duv=0.0030$ ) Dominant WL:Ld =557.3nm Purity=5.0%

Ratio:R=16.2% G=78.2% B=5.6%; Peak WL:Lp=451.6nm FWHM=24.4nm

Render Index:Ra=92.2 CRI=88.4 TM30:Rf=90 Rg=98

R1 =92 R2 =95 R3 =95 R4 =92 R5 =91 R6 =91 R7 =95

R8 =87 R9 =64 R10=86 R11=92 R12=68 R13=93 R14=97 R15=90

### Photo Parameters:

Flux = 1651 lm Eff. : 54.21 lm/W Fe = 5.706 W

### Electrical parameters:

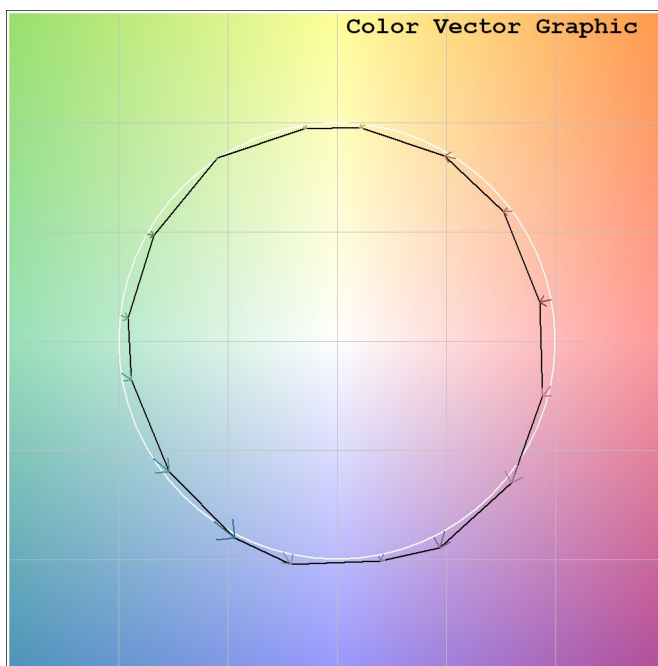
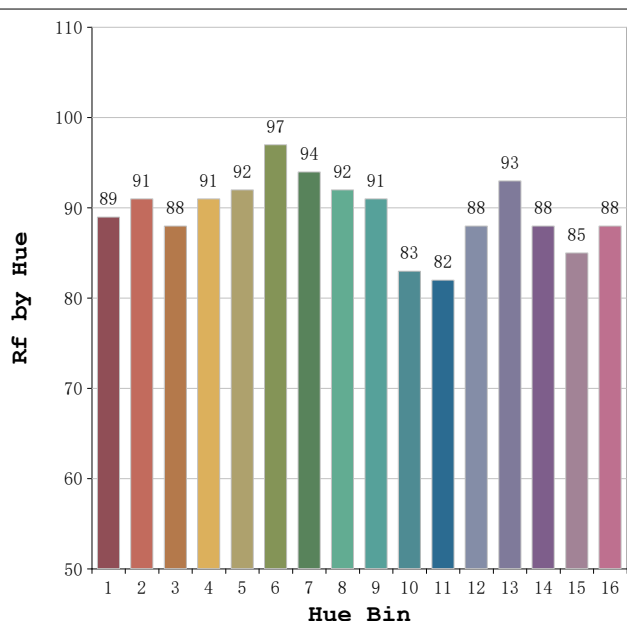
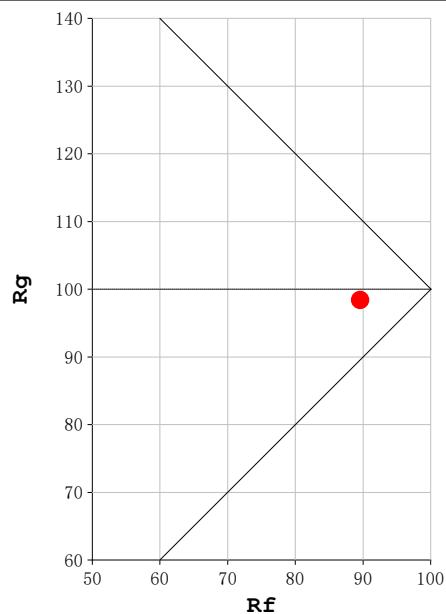
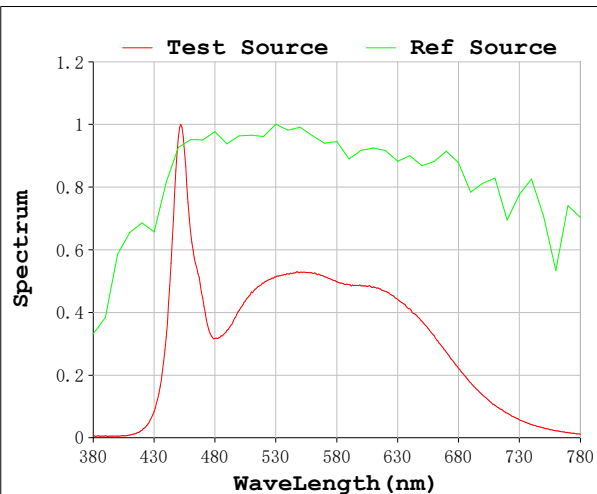
V = 230.07 V I = 0.1380 A P = 30.46 W PF = 0.9591

Status: Integral T = 888 ms Ip = 48290 (74%)

Model:Spotia Zomm CTT  
 Tester:Sergio Carneros  
 Temperature:20Deg  
 Manufacturer:Luz Negra

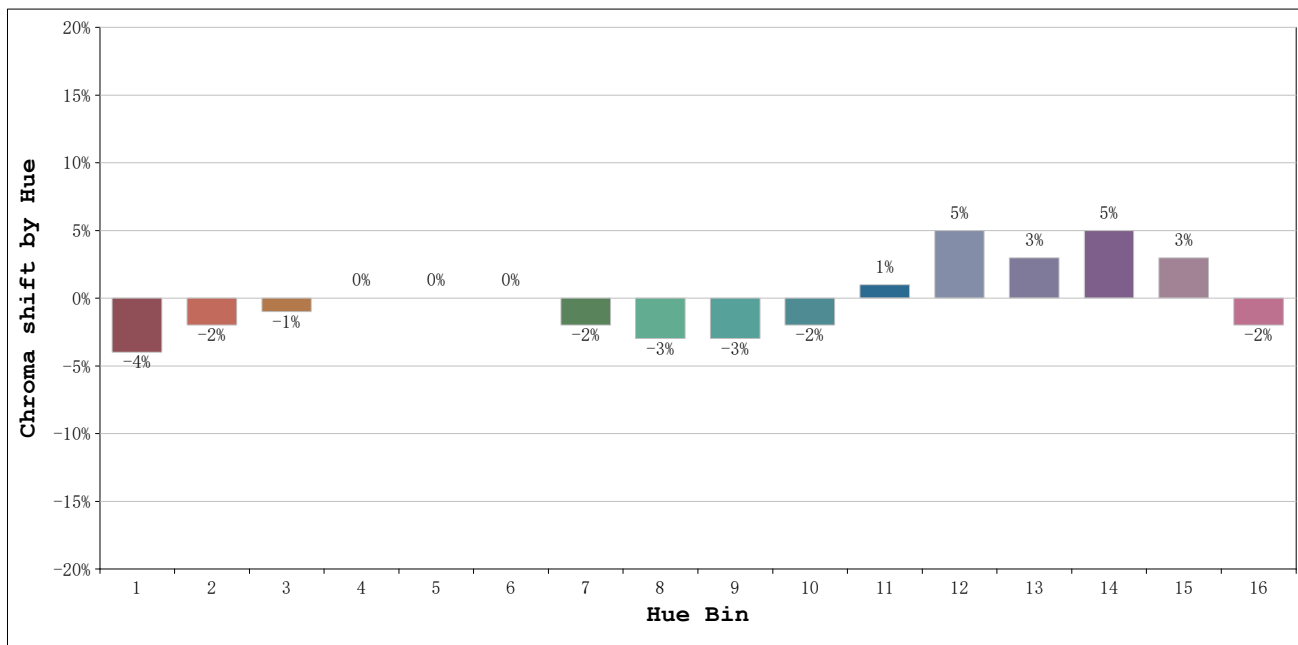
Number:6000K 20° Panal de abeja  
 Date:2026-03-23 08:41:04  
 Humidity:50%  
 Remarks:1 unidad

**Rf: 90**      **CCT: 5423 K**      **u': 0.2052**  
**Rg: 98**      **Duv: 0.0030**      **v': 0.4817**



Model:Spotia Zomm CTT  
 Tester:Sergio Carneros  
 Temperature:20Deg  
 Manufacturer:Luz Negra

Number:6000K 20° Panal de abeja  
 Date:2026-03-23 08:41:04  
 Humidity:50%  
 Remarks:1 unidad

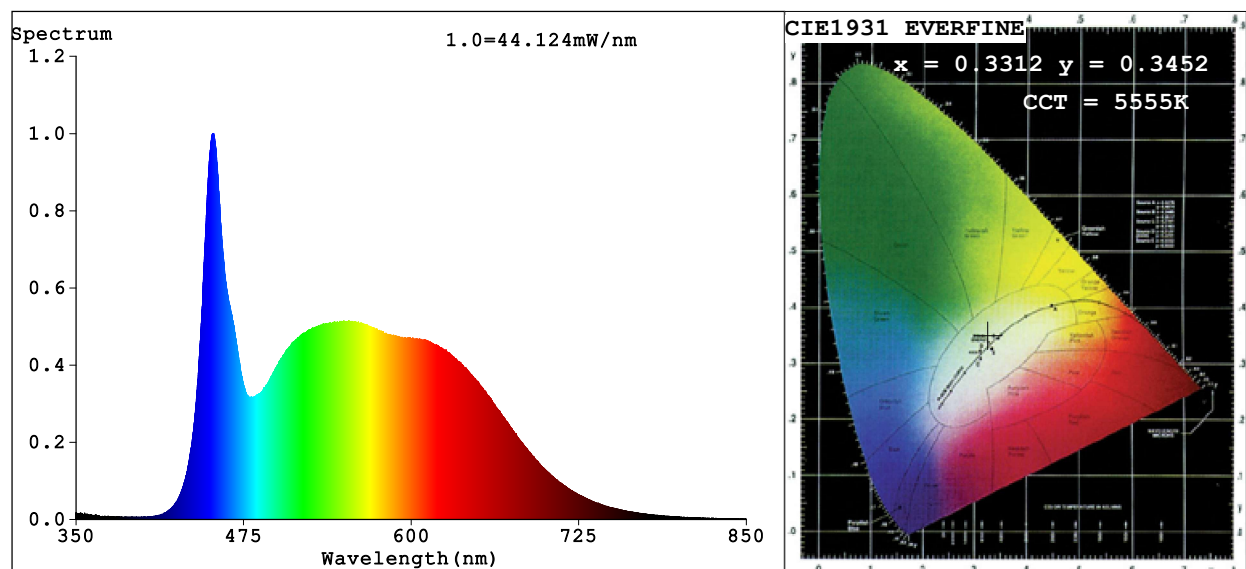


			Graphic shift(%)	
Hue Bin	Hue Angle	Rf	Chroma	Hue
1	0.0° - 22.5°	89	-4	0
2	22.5° - 45.0°	91	-2	2
3	45.0° - 67.5°	88	-1	5
4	67.5° - 90.0°	91	0	2
5	90.0° - 112.5°	92	0	2
6	112.5° - 135.0°	97	0	0
7	135.0° - 157.5°	94	-2	0
8	157.5° - 180.0°	92	-3	1
9	180.0° - 202.5°	91	-3	4
10	202.5° - 225.0°	83	-2	9
11	225.0° - 247.5°	82	1	12
12	247.5° - 270.0°	88	5	5
13	270.0° - 292.5°	93	3	-1
14	292.5° - 315.0°	88	5	-5
15	315.0° - 337.5°	85	3	-8
16	337.5° - 360.0°	88	-2	-4

Model:Spotia Zomm CTT  
 Tester:Sergio Carneros  
 Temperature:20Deg  
 Manufacturer:Luz Negra

Number:6000K 20° Panal de abeja  
 Date:2026-03-23 08:41:04  
 Humidity:50%  
 Remarks:1 unidad

## Spectrum Test Report



### Color Parameters:

Chromaticity Coordinate:  $x=0.3312$   $y=0.3452$   $u'=0.2045$   $v'=0.4794$

CCT=5555K (Duv=0.0026) Dominant WL:Ld =544.6nm Purity=3.0%

Ratio:R=16.0% G=78.2% B=5.7%; Peak WL:Lp=452.6nm FWHM=24.5nm

Render Index:Ra=92.4 CRI=88.7 TM30:Rf=90 Rg=99

R1 =92 R2 =95 R3 =95 R4 =92 R5 =92 R6 =91 R7 =95

R8 =87 R9 =65 R10=87 R11=92 R12=68 R13=94 R14=97 R15=91

### Photo Parameters:

Flux = 1528 lm Eff. : 50.85 lm/W Fe = 5.304 W

### Electrical parameters:

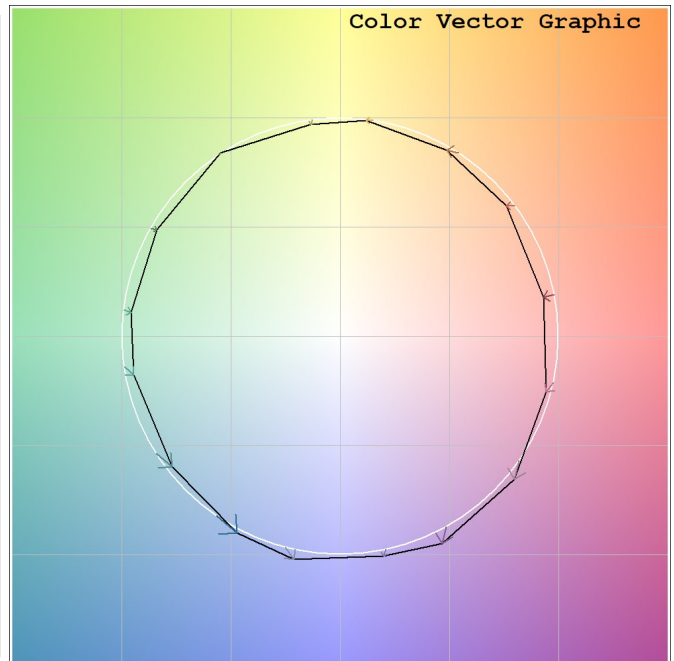
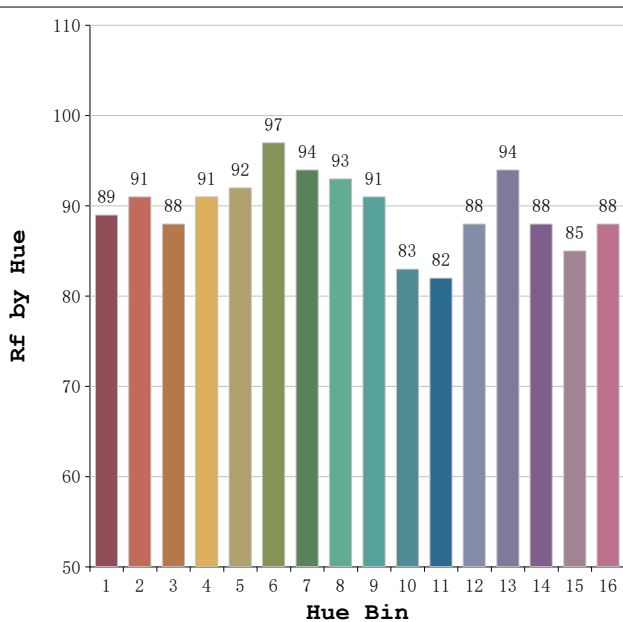
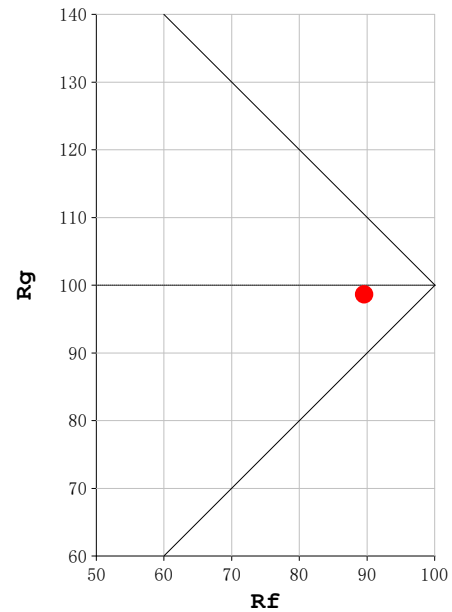
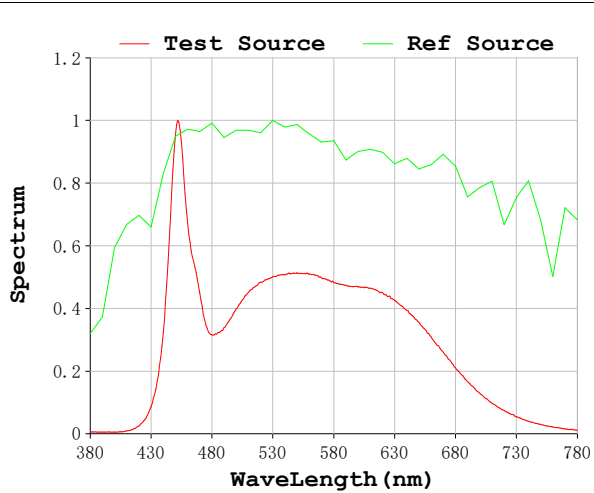
V = 230.08 V I = 0.1363 A P = 30.06 W PF = 0.9586

Status: Integral T = 888 ms Ip = 46175 (70%)

Model:Spotia Zomm CTT  
Tester:Sergio Carneros  
Temperature:20Deg  
Manufacturer:Luz Negra

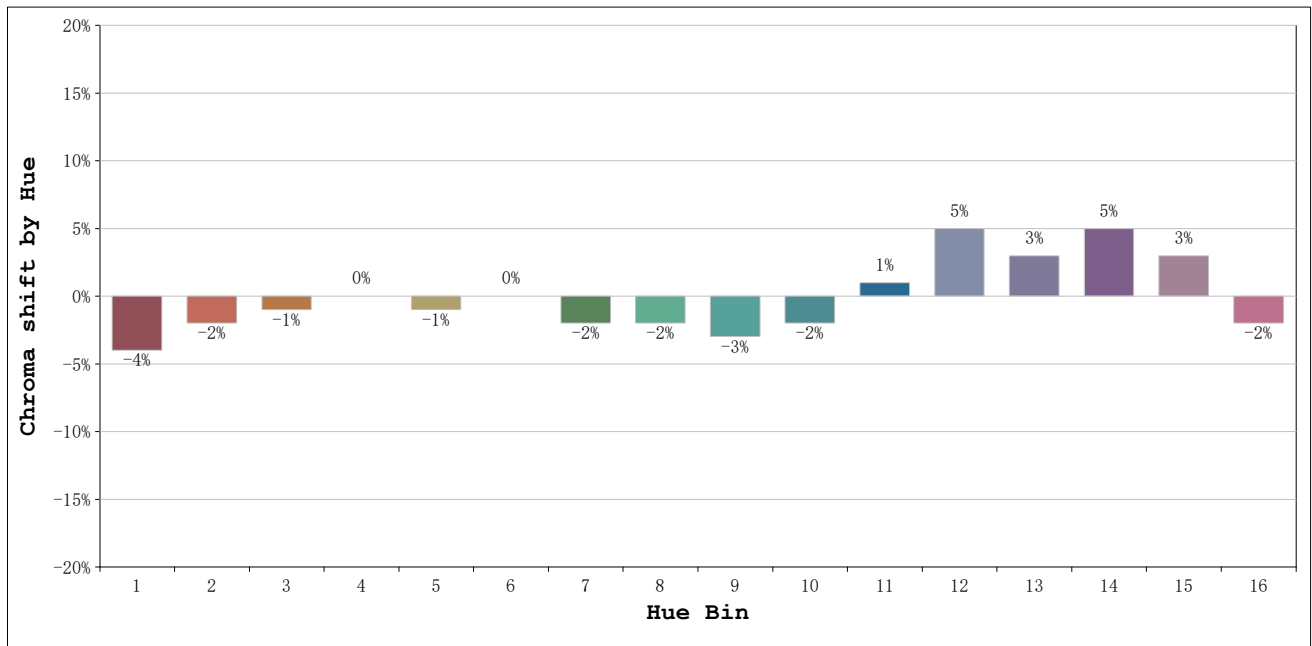
Number:6000K 50° Panal de abeja  
Date:2026-03-23 08:42:09  
Humidity:50%  
Remarks:1 unidad

**Rf: 90**      **CCT: 5555 K**      **u': 0.2045**  
**Rg: 99**      **Duv: 0.0026**      **v': 0.4794**



Model:Spotia Zomm CTT  
 Tester:Sergio Carneros  
 Temperature:20Deg  
 Manufacturer:Luz Negra

Number:6000K 50° Panal de abeja  
 Date:2026-03-23 08:42:09  
 Humidity:50%  
 Remarks:1 unidad



			Graphic shift(%)	
Hue Bin	Hue Angle	Rf	Chroma	Hue
1	0.0° - 22.5°	89	-4	0
2	22.5° - 45.0°	91	-2	2
3	45.0° - 67.5°	88	-1	5
4	67.5° - 90.0°	91	0	3
5	90.0° - 112.5°	92	-1	1
6	112.5° - 135.0°	97	0	0
7	135.0° - 157.5°	94	-2	0
8	157.5° - 180.0°	93	-2	1
9	180.0° - 202.5°	91	-3	4
10	202.5° - 225.0°	83	-2	9
11	225.0° - 247.5°	82	1	12
12	247.5° - 270.0°	88	5	5
13	270.0° - 292.5°	94	3	-1
14	292.5° - 315.0°	88	5	-5
15	315.0° - 337.5°	85	3	-7
16	337.5° - 360.0°	88	-2	-4

Model:Spotia Zomm CTT  
 Tester:Sergio Carneros  
 Temperature:20Deg  
 Manufacturer:Luz Negra

Number:6000K 50° Panal de abeja  
 Date:2026-03-23 08:42:09  
 Humidity:50%  
 Remarks:1 unidad